

**Lexis<sup>®</sup> Draft**

## **Installation Guide**

# Copyright Statement

© 2015 Reed International Books Australia Pty Ltd trading as LexisNexis. LexisNexis and the Knowledge Burst logo are registered trademarks of Reed Elsevier Properties Inc. and used under license ABN 70 001 002 357. All rights reserved.

This document and the information in it is not to be copied or given to any person that is not a permanent employee of the firm without LexisNexis' written permission.

The title and copyright in LexisNexis software, documentation, manuals and methods vests in LexisNexis. Reproduction in any form or by any means is not permitted (except as may be agreed in writing signed by LexisNexis and the customer) nor shall it be sold, lent, hired out or made available in any way to other persons. The user undertakes to prevent copying or use by third parties and the observance of the above.

## LexisNexis Technical Support

Tel: 1800 999 906  
Int Tel: +61 2 9422 8755  
Fax: 02 9422 2405  
Email: techsupport@lexisnexis.com.au

## LexisNexis Customer Support

Tel: 1800 772 772  
Fax: 02 9422 2405  
Email: customersupport@lexisnexis.com.au

## LexisNexis Australia

### SYDNEY

Tower 2, 475-495 Victoria Avenue  
Chatswood NSW 2067  
Locked Bag 2222  
Chatswood Delivery Centre  
Chatswood NSW 2067  
DX 29590 Chatswood NSW  
Tel: 02 9422 2222  
Fax: 02 9422 2444

### MELBOURNE

Level 10, 461 Bourke Street  
Melbourne VIC 3000  
GPO Box 4503  
Melbourne VIC 3001  
Tel: 03 9602 6300  
Fax: 03 9600 2125

### BRISBANE

South Tower Level 3  
527 Gregory Terrace  
Fortitude Valley QLD 4006  
Tel: 1800 772 772  
Fax: 07 3335 0001

### ADELAIDE

Suites 22 & 23  
Level 30, Westpac House  
91 King William Street  
Adelaide SA 5000  
Tel: 1800 772 772

### PERTH

Level 3, 1060 Hay Street  
West Perth  
Perth WA 6005  
Tel: 08 9480 0475  
Fax: 08 9321 0320

# Contents

Copyright Statement .....	2
1. Installation Pre-Requisites .....	4
1.1 Hardware and Software Requirements.....	4
1.2 Network Requirements.....	4
2. Installation Procedure .....	5
2.1 Manual Installation.....	5
2.2 Automated Installation .....	10
2.3 Thin Client/Citrix Installation.....	11
3. Login Procedure .....	13
3.1 Non IP Fixed Access .....	13
3.2 IP Fixed Access .....	14

# 1. Installation Pre-Requisites

## 1.1 Hardware and Software Requirements

The latest hardware and software requirements can be found at the download page of the Lexis Draft website <http://www.knowledge-network.lexisnexis.com.au/home/products/lexisdraft/Downloads/> .

## 1.2 Network Requirements

The following sites should be whitelisted for unrestricted HTTP (Port 80) and HTTPS (Port 443) access:

URL	Description
<a href="http://*.lexisnexis.com*">http://*.lexisnexis.com*</a>	LexisNexis Content Servers
<a href="http://*.lexisnexis.com.au">http://*.lexisnexis.com.au</a>	LexisNexis Content Servers
<a href="http://*.lexisnexis.com.au">http://*.lexisnexis.com.au</a>	LexisNexis Content Servers
<a href="http://138.12.4.174">http://138.12.4.174</a>	IP Address for <a href="http://www.lexisnexis.com">www.lexisnexis.com</a>
<a href="http://e1137.akamaiedge.net*">http://e1137.akamaiedge.net*</a>	Content Fast Delivery & Caching Servers
<a href="http://e1137.b.akamaiedge.net*">http://e1137.b.akamaiedge.net*</a>	Content Fast Delivery & Caching Servers
<a href="http://184.87.20.193">http://184.87.20.193</a>	Akamai IP Address
<a href="http://lexis-nexis.com*">http://lexis-nexis.com*</a>	LexisNexis Content Servers
<a href="http://lexisnexis.com*">http://lexisnexis.com*</a>	LexisNexis Content Servers
<a href="http://lexisnexis.com.au*">http://lexisnexis.com.au*</a>	LexisNexis Content Servers
<a href="http://nexis.com*">http://nexis.com*</a>	LexisNexis Content Servers
<a href="http://www.lexisnexis.com*">http://www.lexisnexis.com*</a>	LexisNexis Content Servers
<a href="http://www.lexisnexis.com.au*">http://www.lexisnexis.com.au*</a>	LexisNexis Content Servers
<a href="http://www.nexis.com*">http://www.nexis.com*</a>	LexisNexis Content Servers
<a href="http://lmoservices.lexisnexis.com">http://lmoservices.lexisnexis.com</a>	Lexis Draft Connectivity Services
<a href="http://www.googleapis.com:443">www.googleapis.com:443</a>	Google Search Feature
<a href="http://Api.datamarket.azure.com">Api.datamarket.azure.com</a>	Bing Search Feature

## 2. Installation Procedure

Lexis Draft can be installed using the following methods:

- Manual
- Automated

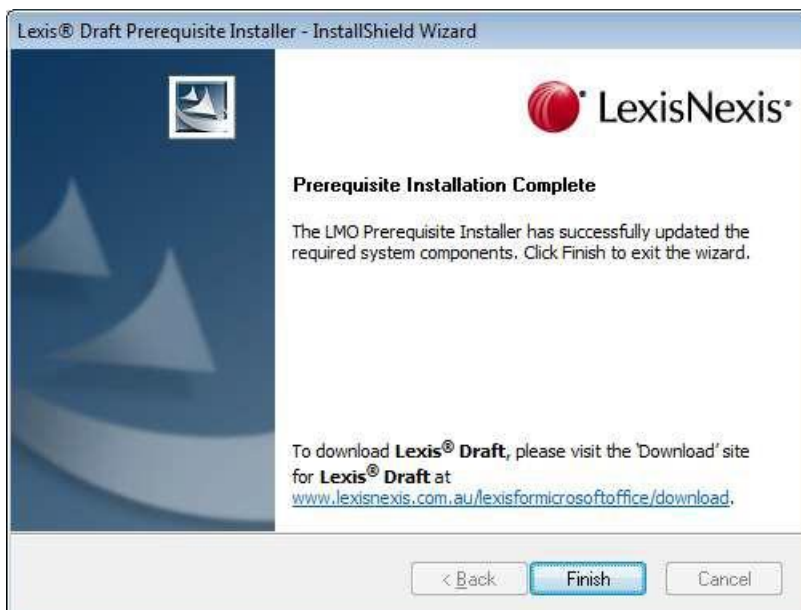
### 2.1 Manual Installation

Take the following steps to install Lexis Draft manually:

1. Get the latest Lexis Draft installation files from the download page of the Lexis Draft website. <http://www.knowledge-network.lexisnexis.com.au/home/products/lexisdraft/Downloads/>.
2. Logon to your computer.
3. Close Microsoft Word and Outlook.
4. If you have Lexis® for Microsoft® Office (LMO) installed on your computer, you must first uninstall the program.

### Pre-Requisite Software

1. Install the Pre-Requisite software by right clicking and choosing 'Run as Administrator'.
2. Click 'Next' to the 'Welcome' screen.
3. The installer will perform a check to see if Microsoft .Net Framework 4 and Microsoft Visual Studio 2010 Tools for Office Runtime is installed. If these components are already installed the following screen will be displayed:

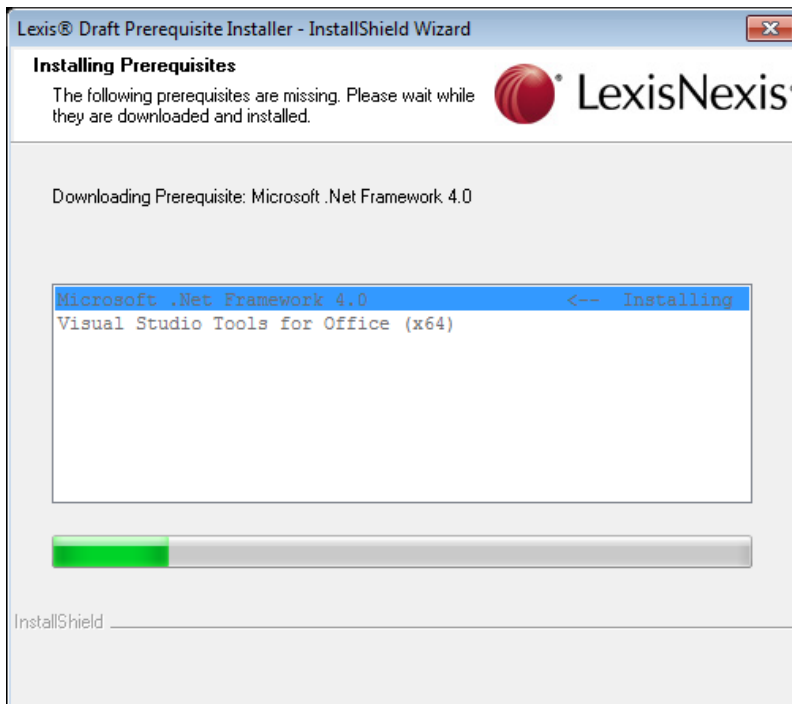


4. If these components are not installed the installer will attempt to download and install them.

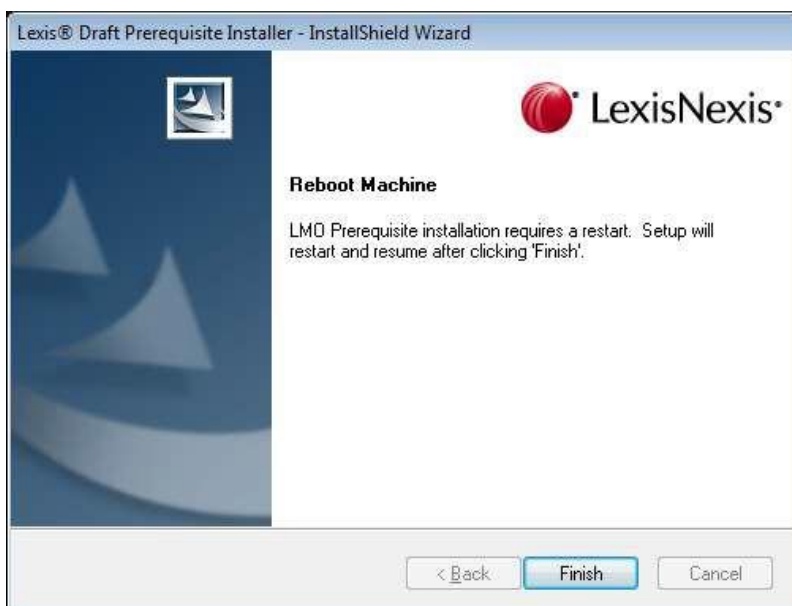
---

**NOTE:** If the pre-requisites are not present the installer requires internet access to download and install them automatically. If the administrator account used to install the software does not have internet access the pre-requisites must be installed manually.

---

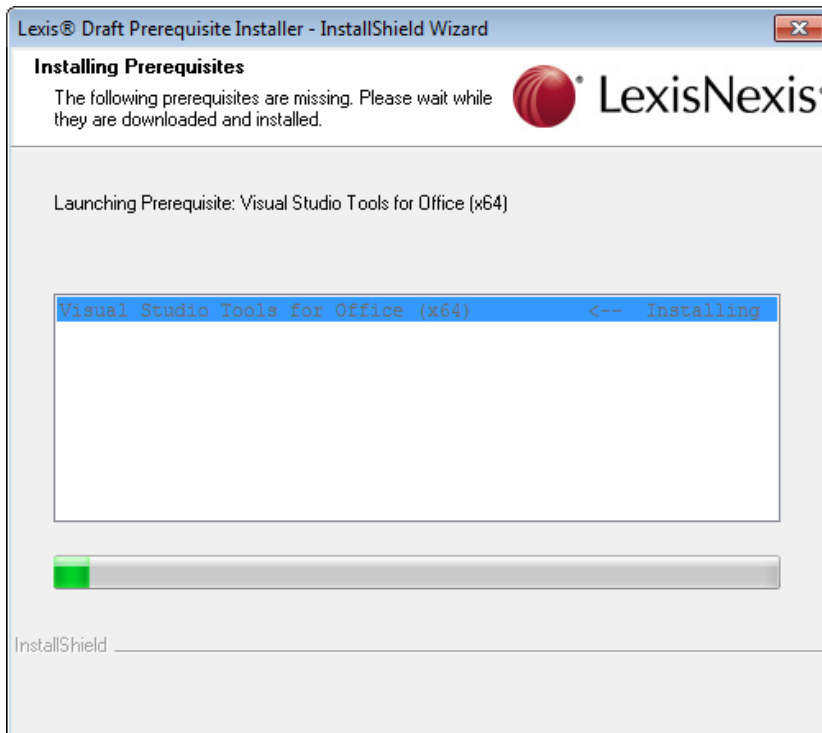


5. On completion of the Microsoft .Net Framework 4 installation a reboot is required:



6. Ensure any unsaved work is saved and click 'Finish' to reboot.

- Following the reboot, the installer will continue to install Microsoft Visual Studio 2010 Tools for Office Runtime:



- On completion the following screen will be displayed:



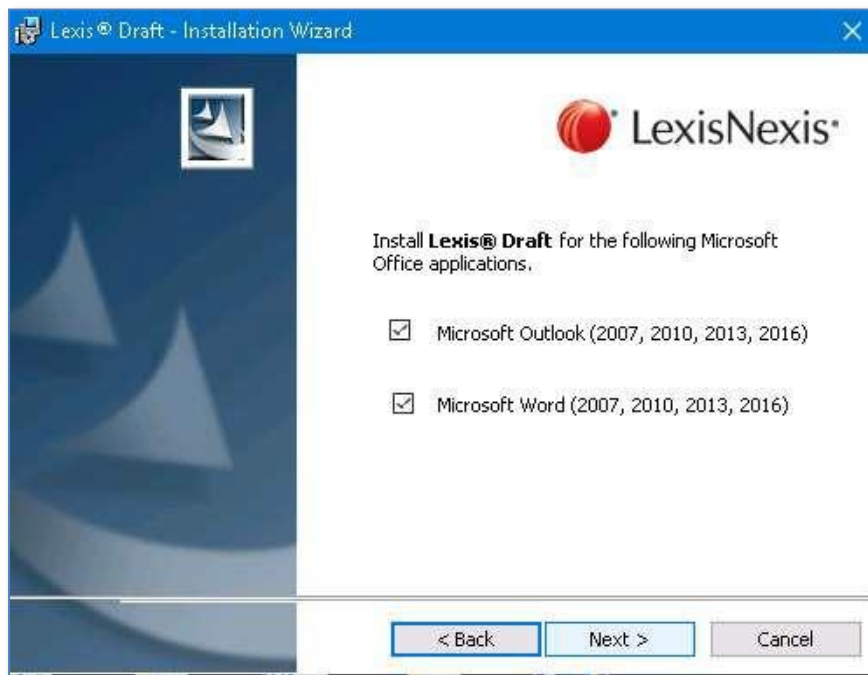
- Click 'Finish' to complete the pre-requisites installation.

## Lexis Draft Software

1. Lexis Draft can now be installed.
2. Install the Lexis Draft software by right clicking and choosing 'Run as Administrator':



3. Accept the license agreement and click 'Next':

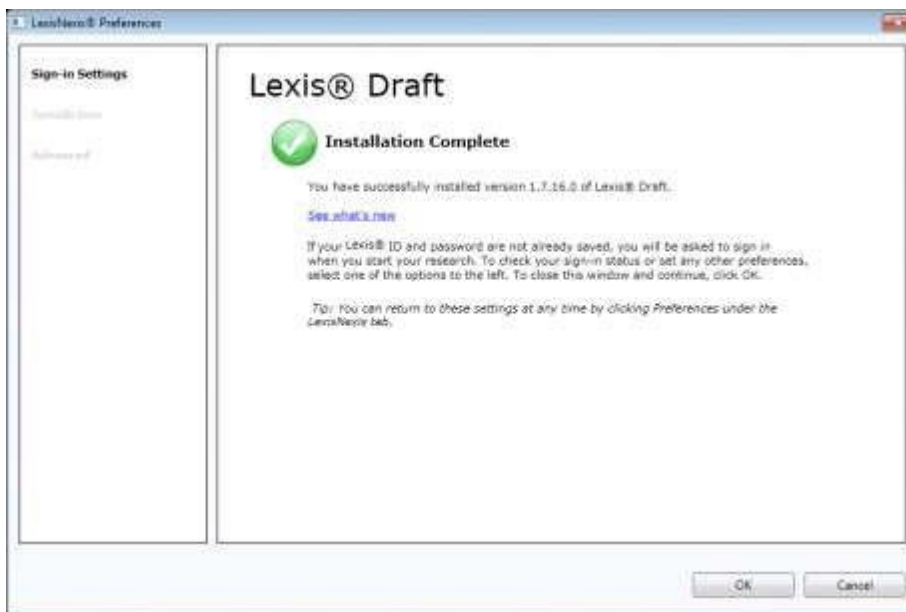


4. Click on both 'Microsoft Word' and 'Microsoft Outlook' to install Lexis Draft, then click 'Next':





5. Click 'Finish' to complete the installation and review preferences:



6. Click 'OK' to complete the installation.
7. Reboot your computer and open Microsoft Word or Microsoft Outlook.
8. You can now view the tab 'Lexis® Draft' in both programs.

## 2.2 Automated Installation

The Lexis Draft MSI supports the following command line switches for an automated installation:

### **Lexis®Draft AU Silent installation - 32Bit with Office 2007**

- `msiexec /i lexisdraftsetup _v3.3.0.0.msi /qnADDLOCAL=AddinWord2007` - For word 2007
- `msiexec /i lexisdraftsetup _v3.3.0.0.msi /qnADDLOCAL=AddinOutlook2007` - For outlook 2007

### **Lexis®Draft AU Silent installation - 32Bit with Office 2010**

- `msiexec /i lexisdraftsetup _v3.3.0.0.msi /qnADDLOCAL=AddinWord2010` - For word 2010
- `msiexec /i lexisdraftsetup _v3.3.0.0.msi /qnADDLOCAL=AddinOutlook2010` - For outlook 2010

### **Lexis®Draft AU Silent installation - 64Bit with Office 2010**

- `msiexec /i lexisdraftsetup _v3.3.0.0.msi /qnADDLOCAL=AddinWord2010` - For word 2010
- `msiexec /i lexisdraftsetup _v3.3.0.0.msi /qnADDLOCAL=AddinOutlook2010` - For outlook 2010

### **Lexis®Draft AU Silent installation - 32Bit with Office 2016**

- `msiexec /i lexisdraftsetup _v3.3.0.0.msi /qnADDLOCAL=AddinWord2016` - For word 2016
- `msiexec /i lexisdraftsetup _v3.3.0.0.msi /qnADDLOCAL=AddinOutlook2016` - For outlook 2016

### **Lexis®Draft AU Silent installation - 64Bit with Office 2016**

- `msiexec /i lexisdraftsetup _v3.3.0.0.msi /qnADDLOCAL=AddinWord2016` - For word 2016
- `msiexec /i lexisdraftsetup _v3.3.0.0.msi /qnADDLOCAL=AddinOutlook2016` - For outlook 2016

### **Lexis®Draft AU Silent installation – using the command - quiet**

- `msiexec /i lexisdraftsetup _v3.3.0.0.msi /quiet`

### **Lexis®Draft AU Silent installation – using the command qn**

- `msiexec /i lexisdraftsetup _v3.3.0.0.msi /qn`

### **Lexis®Draft AU Silent installation – using the basic UI command**

- `msiexec /i lexisdraftsetup _v3.3.0.0.msi /qn`

### **Lexis®Draft AU Silent installation – using the Reduced UI command**

- `msiexec /i lexisdraftsetup _v3.3.0.0.msi /qn`

#### **Lexis®Draft AU Silent installation – using the Full UI command**

- `msiexec /i lexisdraftsetup _v3.3.0.0.msi`

## 2.3 Thin Client/Citrix Installation

For thin client installations where all users require access to Lexis Draft the application can be installed as detailed in the previous sections.

For thin client installations where only a subset of users require access to Lexis Draft the application should be installed as above but with the following registry updates post installation:

---

**WARNING:** If you use Registry Editor incorrectly, you may cause serious problems that may require you to reinstall your operating system. Microsoft cannot guarantee that you can solve problems that result from using Registry Editor incorrectly. **Use Registry Editor at your own risk.**

---

1. Perform an 'All User' deployment as detailed in section 2. Installation Procedure
2. Export and delete the following keys from registry:

#### **32bit Office**

HKEY\_LOCAL\_MACHINE\SOFTWARE\Wow6432Node\Microsoft\Office\Outlook\Addins\Lexis

HKEY\_LOCAL\_MACHINE\SOFTWARE\Wow6432Node\Microsoft\Office\Word\Addins\Lexis

#### **64bit Office**

HKEY\_LOCAL\_MACHINE\SOFTWARE\Microsoft\Office\Outlook\Addins\Lexis

HKEY\_LOCAL\_MACHINE\SOFTWARE\Microsoft\Office\Word\Addins\Lexis

3. Then set the load behaviour to 0 on the following keys:

#### **32bit Office**

HKEY\_LOCAL\_MACHINE\SOFTWARE\Wow6432Node\Microsoft\Office\**<Office Version>**\User Settings\LexisNexis\Create\SOFTWARE\Microsoft\Office\Outlook\Addins\Lexis

HKEY\_LOCAL\_MACHINE\SOFTWARE\Wow6432Node\Microsoft\Office\**<Office Version>**\User Settings\LexisNexis\Create\SOFTWARE\Microsoft\Office\Word\Addins\Lexis

#### **64bit Office**

HKEY\_LOCAL\_MACHINE\SOFTWARE\Microsoft\Office\**<Office Version>**\User Settings\LexisNexis\Create\SOFTWARE\Microsoft\Office\Outlook\Addins\Lexis

HKEY\_LOCAL\_MACHINE\SOFTWARE\Microsoft\Office\**<Office Version>**\User Settings\LexisNexis\Create\SOFTWARE\Microsoft\Office\Word\Addins\Lexis

4. Edit the exported keys (from Step 2) to reflect the following:

HKEY\_CURRENT\_USER\SOFTWARE\Microsoft\Office\Outlook\Addins\Lexis

HKEY\_CURRENT\_USER\SOFTWARE\Microsoft\Office\Word\Addins\Lexis

5. Save the changes.
6. Merge the registry keys for each user that requires access to the application at logon via group policy preferences: <http://technet.microsoft.com/en-au/library/cc753092.aspx>.

## 3. Login Procedure

The login procedure differs slightly between Non IP Fixed and IP Fixed access to LexisNexis Australia Research Solutions (**LNAU**). With Non IP Fixed access, all users are assigned individual named logins. With IP Fixed access, all users accessing the services from an IP range are automatically logged in without the need to enter individual login credentials.

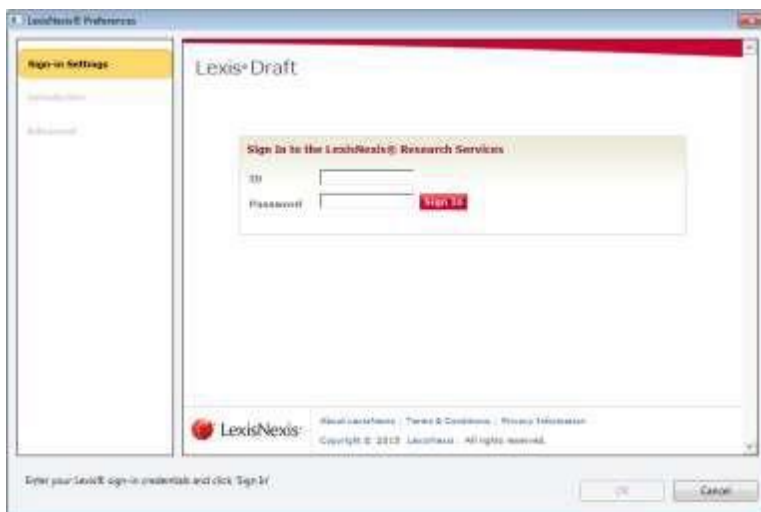
### 3.1 Non IP Fixed Access

To login to Lexis Draft for the first time take the following steps:

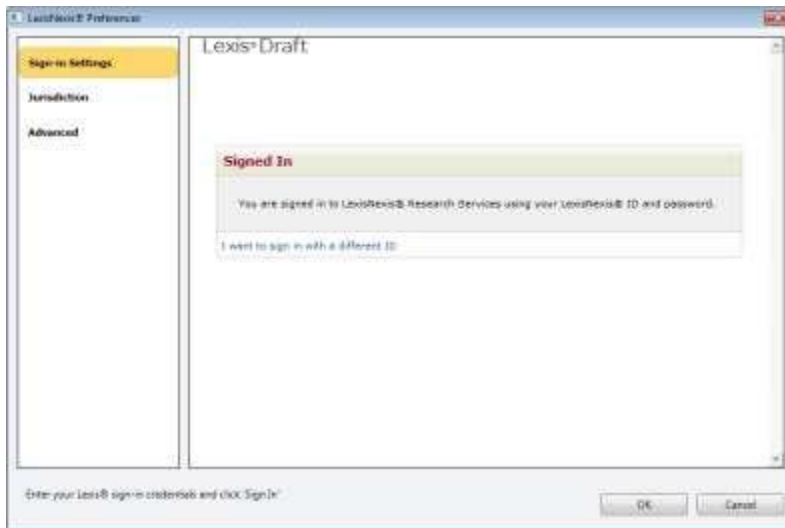
1. Launch Microsoft Word.
2. Select the 'Lexis® Draft' ribbon.
3. If your login credentials are already saved in your web browser in the form of a legal 'cookie', the application will be ready to use:



4. If your login credentials are not stored in a cookie, you will be asked to login:



5. Enter your login credentials and click 'Sign In':



6. Click 'OK' or 'Cancel' to close the preferences screen.
7. The application is ready for use.

---

**NOTE:** If cookies are set to automatically clear at logoff, you will need to repeat the steps above each time you want to use Lexis Draft.

---

## 3.2 IP Fixed Access

Where IP Fixed access is enabled there is no requirement to login to the application with named users IDs.